



EXPORTING TEXAS CORN THROUGH U.S. BEEF AND PORK



In 2020, the market value of beef and pork exports to

Texas Corn = \$33.5 million

(corn consumed by beef and pork exports at average corn price)
9.5 million bushels x \$3.52 per bushel



In 2020, beef and pork exports accounted
for 9.5 million bushels
of Texas corn usage



In 2020, the market value of beef and pork exports to

Texas DDGS = \$11.4 million

(corn consumed by beef and pork exports at average DDGS price)
73,600 tons x \$154.59 per ton

In 2020 beef and pork exports contributed
11.5% of bushel value = \$0.41
at an average price of \$3.52 per bushel

U.S. beef and pork exports contributed

\$52.48
per Texas
corn acre

at a yield of 128 bushels/acre
in 2020



\$451 million

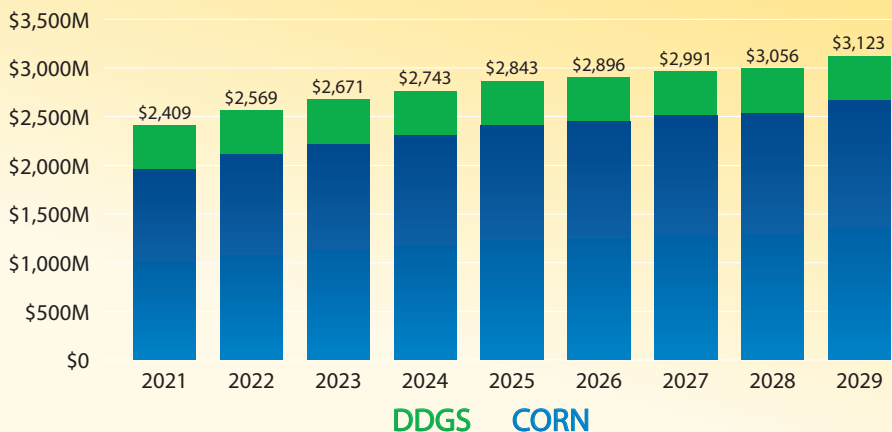
The projected market value
of beef and pork exports to
Texas corn from 2021–2029



\$97.9 million

The projected market value
of beef and pork exports to Texas
DDGS from 2021–2029

U.S. BASELINE CORN AND DDGS VALUE 2021-2029 (\$MILLIONS)



Beef and pork exports accounted for
530.5 million bushels of corn in 2020

Beef and pork exports accounted for
3.027 million tons of DDGS in 2020

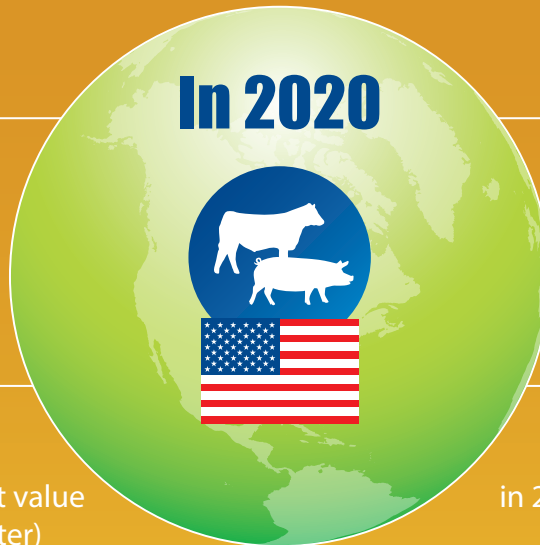
DDGS utilized by beef and pork exports in 2020 represented about
\$0.04 per gallon
to the average gross margin of an ethanol mill



14.1% of U.S. beef production was exported



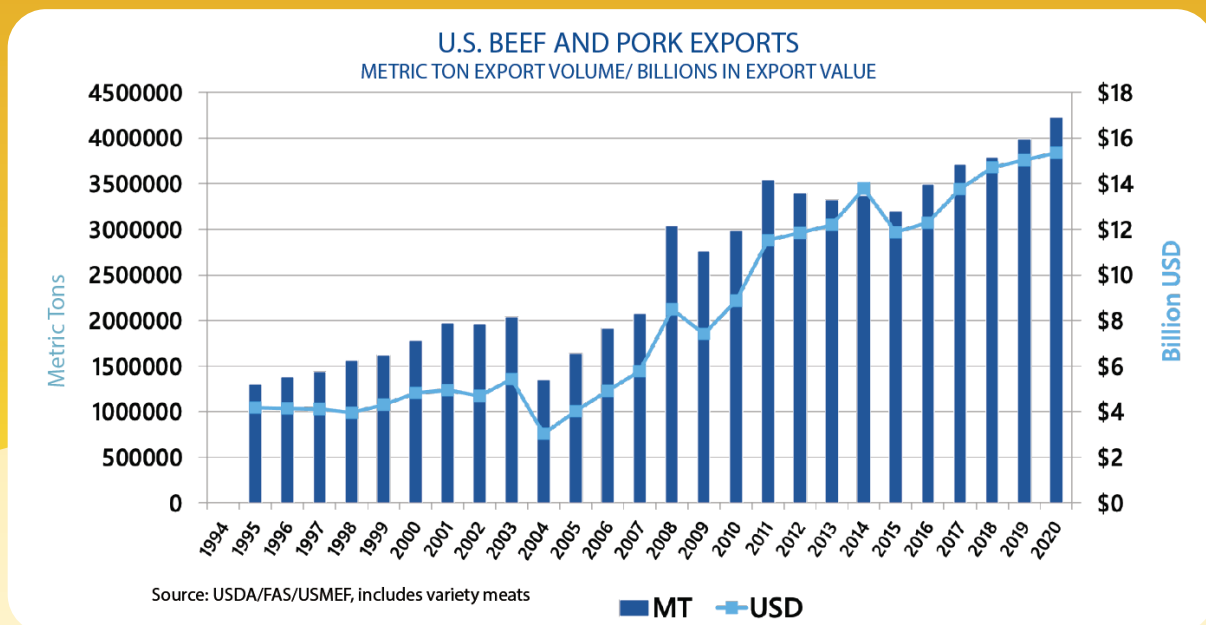
Beef export value equated to
\$309.75 per head of fed cattle slaughtered in 2020 (export value divided by 2020 fed cattle slaughter)



29.3% of U.S. pork production was exported



Pork export value equated to
\$58.65 per head slaughtered in 2020 (export value divided by 2020 commercial hog slaughter)



“The corn industry provides critical support for USMEF’s efforts to expand global demand for U.S. red meat,” says USMEF Senior Vice President of Industry Relations John Hinners. “This study helps quantify the return on that investment.”



The U.S. Meat Export Federation (USMEF) is a non-profit trade association that works to create new opportunities and develop existing international markets for U.S. beef, pork and lamb. USMEF is a unique collaboration of nine distinct segments of American agriculture, joining together to implement successful marketing programs for U.S. pork, beef and lamb around the world.

U.S. Meat Export Federation
1660 Lincoln Street, Suite 2800
Denver, CO 80264
Tel 303.623.MEAT (6328)
Fax 303.623.0297
www.usmef.org



For more information about this independent study conducted by World Perspectives, contact John Hinners, Erin Borrer or Jessica Spreitzer.