

# EXPORTING MINNESOTA CORN THROUGH U.S. BEEF AND PORK



In 2020, the market value of beef and pork exports to

**Minnesota Corn = \$190 million**

(corn consumed by beef and pork exports at average corn price)  
54 million bushels x \$3.52 per bushel



In 2020, beef and pork exports accounted

**for 54 million bushels**

of Minnesota corn usage



In 2020, the market value of beef and pork exports to

**Minnesota DDGS = \$36.87 million**

(corn consumed by beef and pork exports at average DDGS price)  
238,500 tons x \$154.59 per ton

In 2020 beef and pork exports contributed

**11.5% of bushel value = \$0.41**

at an average price of \$3.52 per bushel

U.S. beef and pork exports contributed  
**\$78.72**  
**per Minnesota**  
**corn acre**

at a yield of 192 bushels/acre  
in 2020



**\$1.93 billion**

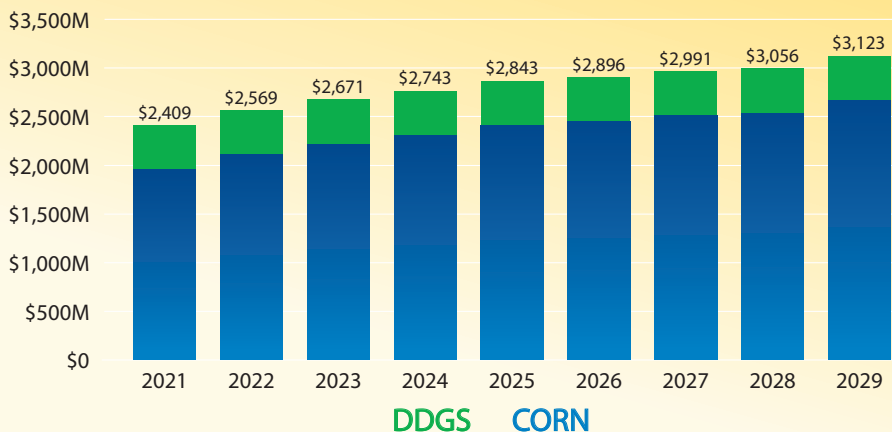
The projected market value  
of beef and pork exports to  
Minnesota corn from 2021–2029



**\$317 million**

The projected market value  
of beef and pork exports to Minnesota  
DDGS from 2021–2029

U.S. BASELINE CORN AND DDGS VALUE 2021-2029  
(\$MILLIONS)



Beef and pork exports accounted for  
**530.5 million bushels of corn in 2020**

Beef and pork exports accounted for  
**3.027 million tons of DDGS in 2020**

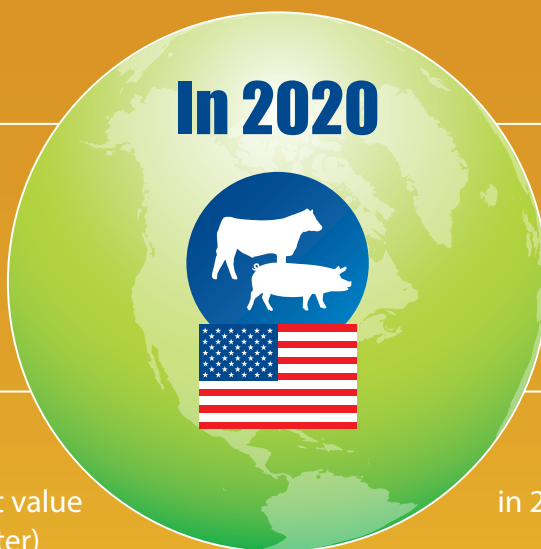
DDGS utilized by beef and pork exports in 2020 represented about  
**\$0.04 per gallon**  
to the average gross margin of an ethanol mill



**14.1%** of U.S. beef production was exported



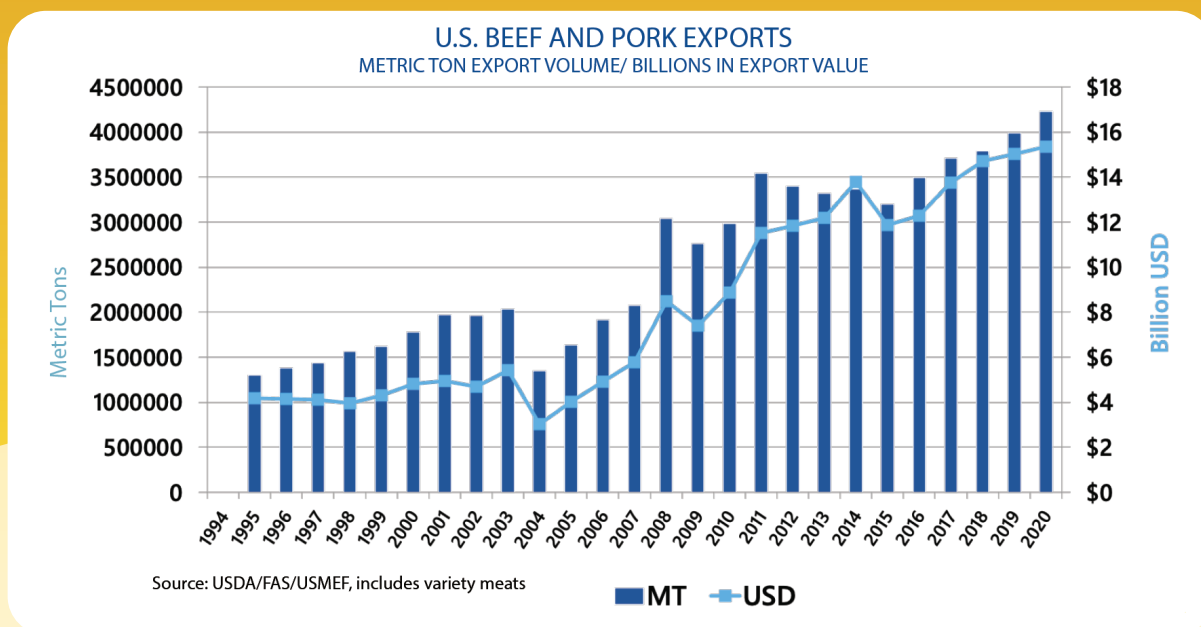
Beef export value equated to  
**\$309.75 per head** of fed cattle slaughtered in 2020 (export value divided by 2020 fed cattle slaughter)



**29.3%** of U.S. pork production was exported



Pork export value equated to  
**\$58.65 per head** slaughtered in 2020 (export value divided by 2020 commercial hog slaughter)



"The corn industry provides critical support for USMEF's efforts to expand global demand for U.S. red meat," says USMEF Senior Vice President of Industry Relations John Hinners. "This study helps quantify the return on that investment."



The U.S. Meat Export Federation (USMEF) is a non-profit trade association that works to create new opportunities and develop existing international markets for U.S. beef, pork and lamb. USMEF is a unique collaboration of nine distinct segments of American agriculture, joining together to implement successful marketing programs for U.S. pork, beef and lamb around the world.

U.S. Meat Export Federation  
1660 Lincoln Street, Suite 2800  
Denver, CO 80264  
Tel 303.623.MEAT (6328)  
Fax 303.623.0297  
[www.usmef.org](http://www.usmef.org)



For more information about this independent study conducted by World Perspectives, contact John Hinners, Erin Borrer or Jessica Spreitzer.